

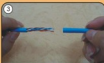
# CAT.6 Plug Assembly Instruction



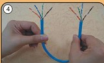
Tools:  
Stripper, Cutter, Pliers, and Crimping Tool



To strip the PVC Jacket in 3cm



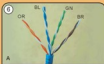
To remove the jacket



To check the cable



To Get H\_Divider



To put H\_divider into the conductors (blue pair and green pair are in opposite direction)



To Straighten the conductors



To cut off conductors neatly



To arrange manage tool  
The blue arrange manage tool is optional



To put manage tool into straighten conductors



To pull the conductors lean gently against the fulcrum by pliers until the manage tool flush with H\_Divider



To cut the conductors neatly



To see after cutting the conductors



To take off the manage tool



To see after taking off the manage tool



To arrange the insert



To put the insert into the conductors neatly



To arrange the plug body



To put the plug body into the insert/cable



To use the crimping tool to crimp the plug body



Assembly Boot (Optional)  
We also available this boot



Finished